

USBV4F PIB²- adapter board with standard 2.54mm connectors

Order number: C1050-4808

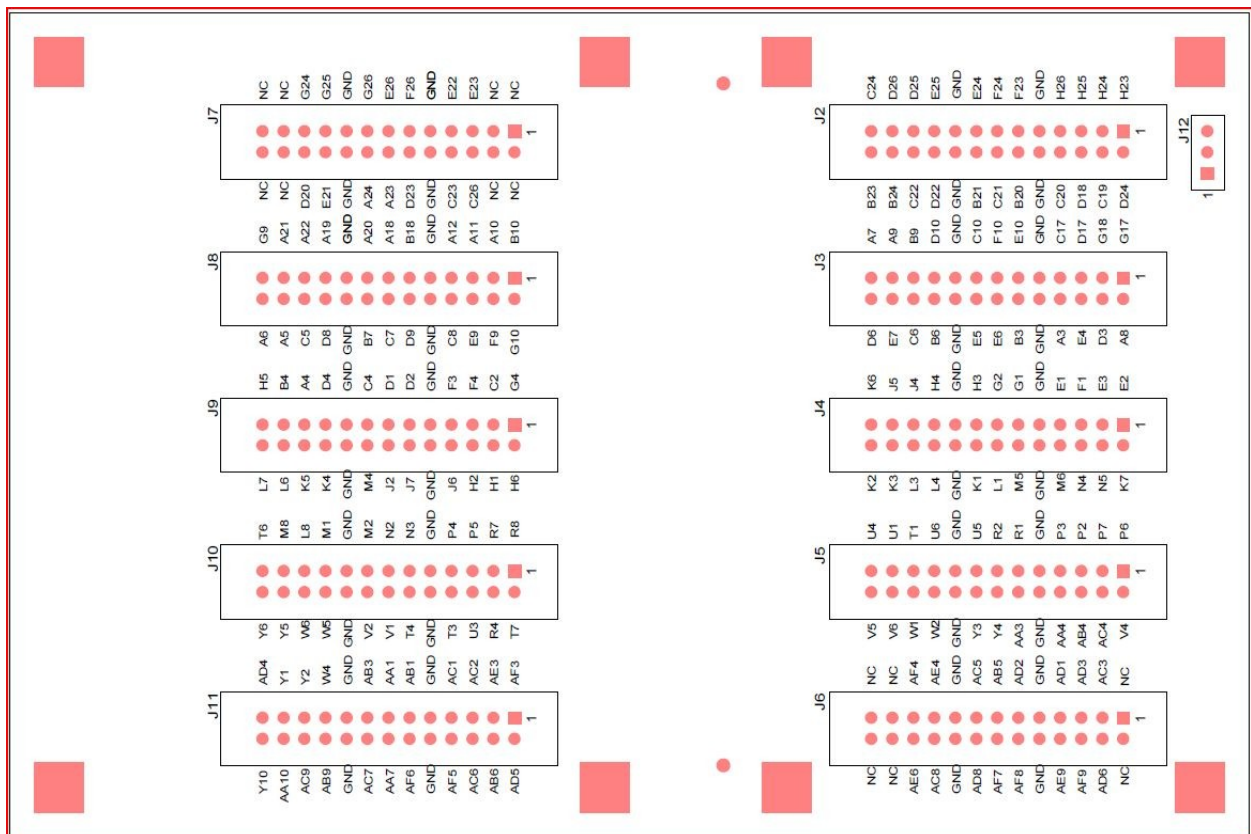


Figure 1: USBV4F PIB²- adapter board

Copyright information

Copyright © 2007 CESYS GmbH. All Rights Reserved. The information in this document is proprietary to CESYS GmbH. No part of this document may be reproduced in any form or by any means or used to make derivative work (such as translation, transformation or adaptation) without written permission from CESYS GmbH.

CESYS GmbH provides this documentation without warranty, term or condition of any kind, either express or implied, including, but not limited to, express and implied warranties of merchantability, fitness for a particular purpose, and non-infringement. While the information contained herein is believed to be accurate, such information is preliminary, and no representations or warranties of accuracy or completeness are made. In no event will CESYS GmbH be liable for damages arising directly or indirectly from any use of or reliance upon the information contained in this document. CESYS GmbH will make improvements or changes in the product(s) and/or program(s) described in this documentation at any time.

CESYS GmbH retains the right to make changes to this product at any time, without notice. Products may have minor variations to this publication, known as errata. CESYS GmbH assumes no liability whatsoever, including infringement of any patent or copyright, for sale and use of CESYS GmbH products.

CESYS GmbH and the CESYS logo are registered trademarks.

All product names are trademarks, registered trademarks, or service marks of their respective owner.

⇒ Please check www.cesys.com to get the latest version of this document.

CESYS Gesellschaft für angewandte Mikroelektronik mbH
Zeppelinstrasse 6a
D – 91074 Herzogenaurach
Germany

Connector pin-out USBV4F to PIB²- adapter board

USBV4F J22 <-> Adapter board							
Pin	Signal Name ^{PI}	FPGA I/O	Testadapter	Pin	Signal Name	FPGA I/O	Testadapter
1	PIB000_08_27P	Y10	J11, Pin26	2	PIB001_08_31P	AF9	J6, Pin6
3	PIB002_08_27N	AA10	J11, Pin24	4	PIB003_08_31N	AE9	J6, Pin8
5	PIB004_08_29P	AC9	J11, Pin22	6	PIB005_08_25P ^{CC}	AF8	J6, Pin12
7	PIB006_08_29N	AB9	J11, Pin20	8	PIB007_08_25N ^{CC}	AF7	J6, Pin14
9	PIB008_08_28P ^{SE}	AC7	J11, Pin16	10	PIB009_08_32P	AD8	J6, Pin16
11	PIB010_08_20P ^{SE}	AA7	J11, Pin14	12	PIB011_08_32N	AC8	J6, Pin20
13	PIB012_08_19P	AF6	J11, Pin12	14	PIB013_08_30P	AE6	J6, Pin22
15	PIB014_08_19N	AF5	J11, Pin8	16	PIB015_08_30N	AD6	J6, Pin4
17	PIB016_08_24P ^{CC}	AC6	J11, Pin6	18	PIB017_08_17P	AF4	J6, Pin21
19	PIB018_08_24N ^{CC}	AB6	J11, Pin4	20	PIB019_08_17N	AE4	J6, Pin19
21	PIB020_08_22P	AD5	J11, Pin2	22	PIB021_08_13P	AC5	J6, Pin15
23	PIB022_08_22N	AD4	J11, Pin25	24	PIB023_08_13N	AB5	J6, Pin13
25	PIB024_08_15P	AF3	J11, Pin1	26	PIB025_08_16P	AD2	J6, Pin11
27	PIB026_08_15N	AE3	J11, Pin3	28	PIB027_08_16N	AD1	J6, Pin7
29	PIB028_08_14P	AC2	J11, Pin5	30	PIB029_08_18P	AD3	J6, Pin5
31	PIB030_08_14N	AC1	J11, Pin7	32	PIB031_08_18N	AC3	J6, Pin3
33	PIB032_08_10P	AB1	J11, Pin11	34	PIB033_08_11P	AC4	J5, Pin4
35	PIB034_08_10N	AA1	J11, Pin13	36	PIB035_08_11N	AB4	J5, Pin6
37	PIB036_08_12P ^{SE}	AB3	J11, Pin15	38	PIB037_08_07P	AA4	J5, Pin8
39	PIB038_08_04P ^{SE}	W4	J11, Pin19	40	PIB039_08_07N	AA3	J5, Pin12
41	PIB040_08_06P	Y2	J11, Pin21	42	PIB041_08_08P ^{CC}	Y4	J5, Pin14
43	PIB042_08_06N	Y1	J11, Pin23	44	PIB043_08_08N ^{CC}	Y3	J5, Pin16
45	PIB044_08_09P ^{CC}	Y6	J10, Pin26	46	PIB045_08_01P	W2	J5, Pin20
47	PIB046_08_09N ^{CC}	Y5	J10, Pin24	48	PIB047_08_01N	W1	J5, Pin22
49	PIB048_08_05P	W6	J10, Pin22	50	PIB049_08_02P	V6	J5, Pin24
51	PIB050_08_05N	W5	J10, Pin20	52	PIB051_08_02N	V5	J5, Pin26
53	PIB052_10_30P	V2	J10, Pin16	54	PIB053_10_29P	V4	J5, Pin2
55	PIB054_10_30N	V1	J10, Pin14	56	PIB055_10_29N	U4	J5, Pin25
57	PIB056_10_26P	T4	J10, Pin12	58	PIB057_10_24P ^{CC}	U1	J5, Pin23
59	PIB058_10_26N	T3	J10, Pin8	60	PIB059_10_24N ^{CC}	T1	J5, Pin21
61	PIB060_10_28P ^{SE}	U3	J10, Pin6	62	PIB061_10_32P	U6	J5, Pin19
63	PIB062_10_20P ^{SE}	R4	J10, Pin4	64	PIB063_10_32N	U5	J5, Pin15
65	PIB064_10_27P	T7	J10, Pin2	66	PIB065_10_22P	R2	J5, Pin13
67	PIB066_10_27N	T6	J10, Pin25	68	PIB067_10_22N	R1	J5, Pin11
69	PIB068_10_25P ^{CC}	R8	J10, Pin1	70	PIB069_10_16P	P3	J5, Pin7
71	PIB070_10_25N ^{CC}	R7	J10, Pin3	72	PIB071_10_16N	P2	J5, Pin5
73	PIB072_10_18P	P5	J10, Pin5	74	PIB073_10_21P	P7	J5, Pin3
75	PIB074_10_18N	P4	J10, Pin7	76	PIB075_10_21N	P6	J5, Pin1
77	PIB076_10_14P	N3	J10, Pin11	78	PIB077_10_15P	N5	J4, Pin4

PI PIBxxx_bb_ii: xxx=PIB-I/O; bb=FPGA bank; ii=FPGA bank I/O; P=positive logic, N=negative logic for differential I/O standards

SE Single ended only I/O

CC Clock capable IO

USBV4F J22 <-> Adapter board							
Pin	Signal Name	FPGA I/O	Testadapter	Pin	Signal Name	FPGA I/O	Testadapter
79	PIB078_10_14N	N2	J10, Pin13	80	PIB079_10_15N	N4	J4, Pin6
81	PIB080_10_11P	M2	J10, Pin15	82	PIB081_10_13P	M6	J4, Pin8
83	PIB082_10_11N	M1	J10, Pin19	84	PIB083_10_13N	M5	J4, Pin12
85	PIB084_10_09N ^{CC}	L8	J10, Pin21	86	PIB085_10_10P	L1	J4, Pin14
87	PIB086_10_09P ^{CC}	M8	J10, Pin23	88	PIB087_10_10N	K1	J4, Pin16
89	PIB088_10_05P	L7	J9, Pin26	90	PIB089_10_08P ^{CC}	L4	J4, Pin20
91	PIB090_10_05N	L6	J9, Pin24	92	PIB091_10_08N ^{CC}	L3	J4, Pin22
93	PIB092_10_06P	K5	J9, Pin22	94	PIB093_10_07P	K3	J4, Pin24
95	PIB094_10_06N	K4	J9, Pin20	96	PIB095_10_07N	K2	J4, Pin26
97	PIB096_10_12P ^{SE}	M4	J9, Pin16	98	PIB097_10_03P	K7	J4, Pin2
99	PIB098_10_04P ^{SE}	J2	J9, Pin14	100	PIB099_10_03N	K6	J4, Pin25
101	PIB100_10_01P	J7	J9, Pin12	102	PIB101_10_02P	J5	J4, Pin23
103	PIB102_10_01N	J6	J9, Pin8	104	PIB103_10_02N	J4	J4, Pin21
105	PIB104_06_32P	H2	J9, Pin6	106	PIB105_06_31P	H4	J4, Pin19
107	PIB106_06_32N	H1	J9, Pin4	108	PIB107_06_31N	H3	J4, Pin15
109	PIB108_06_29P	H6	J9, Pin2	110	PIB109_06_30P	G2	J4, Pin13
111	PIB110_06_29N	H5	J9, Pin25	112	PIB111_06_30N	G1	J4, Pin11
113	PIB112_06_28P ^{SE}	G4	J9, Pin1	114	PIB113_06_26P	E1	J4, Pin7
115	PIB114_06_20P ^{SE}	C2	J9, Pin3	116	PIB115_06_26N	F1	J4, Pin5
117	PIB116_06_27P	F4	J9, Pin5	118	PIB117_06_24P ^{CC}	E3	J4, Pin3
119	PIB118_06_27N	F3	J9, Pin7	120	PIB119_06_24N ^{CC}	E2	J4, Pin1
121	PIB120_06_25P ^{CC}	D2	J9, Pin11	122	PIB121_06_22P	D3	J3, Pin4
123	PIB122_06_25N ^{CC}	D1	J9, Pin13	124	PIB123_06_22N	E4	J3, Pin6
125	PIB124_06_16P	C4	J9, Pin15	126	PIB125_06_14P	A3	J3, Pin8
127	PIB126_06_16N	D4	J9, Pin19	128	PIB127_06_14N	B3	J3, Pin12
129	PIB128_06_15P	A4	J9, Pin21	130	PIB129_06_18P	E6	J3, Pin14
131	PIB130_06_15N	B4	J9, Pin23	132	PIB131_06_18N	E5	J3, Pin16
133	PIB132_06_06P	A6	J8, Pin26	134	PIB133_06_08P ^{CC}	B6	J3, Pin20
135	PIB134_06_06N	A5	J8, Pin24	136	PIB135_06_08N ^{CC}	C6	J3, Pin22
137	PIB136_06_12P ^{SE}	C5	J8, Pin22	138	PIB137_06_17P	E7	J3, Pin24
139	PIB138_06_04P ^{SE}	D8	J8, Pin20	140	PIB139_06_17N	D6	J3, Pin26
141	PIB140_06_11P	B7	J8, Pin16	142	PIB141_06_03P	A8	J3, Pin2
143	PIB142_06_11N	C7	J8, Pin14	144	PIB143_06_03N	A7	J3, Pin25
145	PIB144_06_02P	D9	J8, Pin12	146	PIB145_06_13P	A9	J3, Pin23
147	PIB146_06_02N	C8	J8, Pin8	148	PIB147_06_13N	B9	J3, Pin21
149	PIB148_06_07P	E9	J8, Pin6	150	PIB149_06_01P	D10	J3, Pin19
151	PIB150_06_07N	F9	J8, Pin4	152	PIB151_06_01N	C10	J3, Pin15
153	PIB152_06_09P ^{CC}	G10	J8, Pin2	154	PIB153_06_05P	F10	J3, Pin13
155	PIB154_06_09N ^{CC}	G9	J8, Pin25	156	PIB155_06_05N	E10	J3, Pin11
157	PIBCLK1N ^{!!}	B10	J8, Pin1	158	PIB156_05_01P	C17	J3, Pin7
159	PIBCLK1P ^{!!}	A10	J8, Pin3	160	PIB157_05_01N	D17	J3, Pin5
161	PIBCLK0N ^{!!}	A11	J8, Pin5	162	PIB158_05_09P ^{CC}	G18	J3, Pin3
163	PIBCLK0P ^{!!}	A12	J8, Pin7	164	PIB159_05_09N ^{CC}	G17	J3, Pin1

CC Clock capable IO

SE Single ended only I/O

!! +3,3 Volt only clock input pins, optionally differential; usable as standard I/O if not used as clock

USBV4F J22 <-> Adapter board							
Pin	Signal Name	FPGA I/O	Testadapter	Pin	Signal Name	FPGA I/O	Testadapter
165	PIB160_05_03P	B18	J8, Pin11	166	PIB161_05_07P	C19	J2, Pin4
167	PIB162_05_03N	A18	J8, Pin13	168	PIB163_05_07N	D18	J2, Pin6
169	PIB164_05_13P	A20	J8, Pin15	170	PIB165_05_02P	C20	J2, Pin8
171	PIB166_05_13N	A19	J8, Pin19	172	PIB167_05_02N	B20	J2, Pin12
173	PIB168_05_15P	A22	J8, Pin21	174	PIB169_05_06P	C21	J2, Pin14
175	PIB170_05_15N	A21	J8, Pin23	176	PIB171_05_06N	B21	J2, Pin16
177	PIB172_05_04P ^{SE}	D20	J7, Pin22	178	PIB173_05_14P	D22	J2, Pin20
179	PIB174_05_12P ^{SE}	E21	J7, Pin20	180	PIB175_05_14N	C22	J2, Pin22
181	PIB176_05_08P ^{CC}	A24	J7, Pin16	182	PIB177_05_10P	B24	J2, Pin24
183	PIB178_05_08N ^{CC}	A23	J7, Pin14	184	PIB179_05_10N	B23	J2, Pin26
185	PIB180_05_21P	D23	J7, Pin12	186	PIB181_05_16P	D24	J2, Pin2
187	PIB182_05_21N	C23	J7, Pin8	188	PIB183_05_16N	C24	J2, Pin25
189	PIB184_05_20P ^{SE}	C26	J7, Pin6	190	PIB185_05_25P ^{CC}	D26	J2, Pin23
191	PIB186_05_28P ^{SE}	G24	J7, Pin21	192	PIB187_05_25N ^{CC}	D25	J2, Pin21
193	PIB188_05_18P	E23	J7, Pin5	194	PIB189_05_27P	E25	J2, Pin19
195	PIB190_05_18N	E22	J7, Pin7	196	PIB191_05_27N	E24	J2, Pin15
197	PIB192_05_29P	F26	J7, Pin11	198	PIB193_05_24P ^{CC}	F24	J2, Pin13
199	PIB194_05_29N	E26	J7, Pin13	200	PIB195_05_24N ^{CC}	F23	J2, Pin11
201	PIB196_05_31P	G26	J7, Pin15	202	PIB197_05_32P	H26	J2, Pin7
203	PIB198_05_31N	G25	J7, Pin19	204	PIB199_05_32N	H25	J2, Pin5
205	VREF_PIB	--	--	206	PIB200_05_30P	H24	J2, Pin3
207	+5 Volt	--	--	208	PIB201_05_30N	H23	J2, Pin1

SE Single ended only I/O
CC Clock capable IO

Connector pin-out PIB²- adapter board to USBV4F

Adapter board J2 <-> USBV4F J22							
Testadapter	Signal Name	Pin	FPGA I/O	Testadapter	Signal Name	Pin	FPGA I/O
J2, Pin1	PIB201_05_30N	208	H23	J2, Pin2	PIB181_05_16P	186	D24
J2, Pin3	PIB200_05_30P	206	H24	J2, Pin4	PIB161_05_07P	166	C19
J2, Pin5	PIB199_05_32N	204	H25	J2, Pin6	PIB163_05_07N	168	D18
J2, Pin7	PIB197_05_32P	202	H26	J2, Pin8	PIB165_05_02P	170	C20
J2, Pin9	GND	-	-	J2, Pin10	GND	-	-
J2, Pin11	PIB195_05_24N	200	F23	J2, Pin12	PIB167_05_02N	172	B20
J2, Pin13	PIB193_05_24P	198	F24	J2, Pin14	PIB169_05_06P	174	C21
J2, Pin15	PIB191_05_27N	196	E24	J2, Pin16	PIB171_05_06N	176	B21
J2, Pin17	GND	-	-	J2, Pin18	GND	-	-
J2, Pin19	PIB189_05_27P	194	E25	J2, Pin20	PIB173_05_14P	178	D22
J2, Pin21	PIB187_05_25N	192	D25	J2, Pin22	PIB175_05_14N	180	C22
J2, Pin23	PIB185_05_25P	190	D26	J2, Pin24	PIB177_05_10P	182	B24
J2, Pin25	PIB183_05_16N	188	C24	J2, Pin26	PIB179_05_10N	184	B23

Adapter board J3 <-> USBV4F J22							
Testadapter	Signal Name	Pin	FPGA I/O	Testadapter	Signal Name	Pin	FPGA I/O
J3, Pin1	PIB159_05_09N	164	G17	J3, Pin2	PIB141_06_03P	142	A8
J3, Pin3	PIB158_05_09P	162	G18	J3, Pin4	PIB121_06_22P	122	D3
J3, Pin5	PIB157_05_01N	160	D17	J3, Pin6	PIB123_06_22N	124	E4
J3, Pin7	PIB156_05_01P	158	C17	J3, Pin8	PIB125_06_14P	126	A3
J3, Pin9	GND	-	-	J3, Pin10	GND	-	-
J3, Pin11	PIB155_06_05N	156	E10	J3, Pin12	PIB127_06_14N	128	B3
J3, Pin13	PIB153_06_05P	154	F10	J3, Pin14	PIB129_06_18P	130	E6
J3, Pin15	PIB151_06_01N	152	C10	J3, Pin16	PIB131_06_18N	132	E5
J3, Pin17	GND	-	-	J3, Pin18	GND	-	-
J3, Pin19	PIB149_06_01P	150	D10	J3, Pin20	PIB133_06_08P	134	B6
J3, Pin21	PIB147_06_13N	148	B9	J3, Pin22	PIB135_06_08N	136	C6
J3, Pin23	PIB145_06_13P	146	A9	J3, Pin24	PIB137_06_17P	138	E7
J3, Pin25	PIB143_06_03N	144	A7	J3, Pin26	PIB139_06_17N	140	D6

Adapter board J4 <-> USBV4F J22							
Testadapter	Signal Name	Pin	FPGA I/O	Testadapter	Signal Name	Pin	FPGA I/O
J4, Pin1	PIB119_06_24N	120	E2	J4, Pin2	PIB097_10_03P	98	K7
J4, Pin3	PIB117_06_24P	118	E3	J4, Pin4	PIB077_10_15P	78	N5
J4, Pin5	PIB115_06_26N	116	F1	J4, Pin6	PIB079_10_15N	80	N4
J4, Pin7	PIB113_06_26P	114	E1	J4, Pin8	PIB081_10_13P	82	M6
J4, Pin9	GND	-	-	J4, Pin10	GND	-	-
J4, Pin11	PIB111_06_30N	112	G1	J4, Pin12	PIB083_10_13N	84	M5
J4, Pin13	PIB109_06_30P	110	G2	J4, Pin14	PIB085_10_10P	86	L1
J4, Pin15	PIB107_06_31N	108	H3	J4, Pin16	PIB087_10_10N	88	K1

Adapter board J4 <-> USBV4F J22							
Testadapter	Signal Name	Pin	FPGA I/O	Testadapter	Signal Name	Pin	FPGA I/O
J4, Pin17	GND	-	-	J4, Pin18	GND	-	-
J4, Pin19	PIB105_06_31P	106	H4	J4, Pin20	PIB089_10_08P	90	L4
J4, Pin21	PIB103_10_02N	104	J4	J4, Pin22	PIB091_10_08N	92	L3
J4, Pin23	PIB101_10_02P	102	J5	J4, Pin24	PIB093_10_07P	94	K3
J4, Pin25	PIB099_10_03N	100	K6	J4, Pin26	PIB095_10_07N	96	K2

Adapter board J5 <-> USBV4F J22							
Testadapter	Signal Name	Pin	FPGA I/O	Testadapter	Signal Name	Pin	FPGA I/O
J5, Pin1	PIB075_10_21N	76	P6	J5, Pin2	PIB053_10_29P	54	V4
J5, Pin3	PIB073_10_21P	74	P7	J5, Pin4	PIB033_08_11P	34	AC4
J5, Pin5	PIB071_10_16N	72	P2	J5, Pin6	PIB035_08_11N	36	AB4
J5, Pin7	PIB069_10_16P	70	P3	J5, Pin8	PIB037_08_07P	38	AA4
J5, Pin9	GND	-	-	J5, Pin10	GND	-	-
J5, Pin11	PIB067_10_22N	68	R1	J5, Pin12	PIB039_08_07N	40	AA3
J5, Pin13	PIB065_10_22P	66	R2	J5, Pin14	PIB041_08_08P	42	Y4
J5, Pin15	PIB063_10_32N	64	U5	J5, Pin16	PIB043_08_08N	44	Y3
J5, Pin17	GND	-	-	J5, Pin18	GND	-	-
J5, Pin19	PIB061_10_32P	62	U6	J5, Pin20	PIB045_08_01P	46	W2
J5, Pin21	PIB059_10_24N	60	T1	J5, Pin22	PIB047_08_01N	48	W1
J5, Pin23	PIB057_10_24P	58	U1	J5, Pin24	PIB049_08_02P	50	V6
J5, Pin25	PIB055_10_29N	56	U4	J5, Pin26	PIB051_08_02N	52	V5

Adapter board J6 <-> USBV4F J22							
Testadapter	Signal Name	Pin	FPGA I/O	Testadapter	Signal Name	Pin	FPGA I/O
J6, Pin1	N.C.	-	-	J6, Pin2	N.C.	-	-
J6, Pin3	PIB031_08_18N	32	AC3	J6, Pin4	PIB015_08_30N	16	AD6
J6, Pin5	PIB029_08_18P	30	AD3	J6, Pin6	PIB001_08_31P	2	AF9
J6, Pin7	PIB027_08_16N	28	AD1	J6, Pin8	PIB003_08_31N	4	AE9
J6, Pin9	GND	-	-	J6, Pin10	GND	-	-
J6, Pin11	PIB025_08_16P	26	AD2	J6, Pin12	PIB005_08_25P	6	AF8
J6, Pin13	PIB023_08_13N	24	AB5	J6, Pin14	PIB007_08_25N	8	AF7
J6, Pin15	PIB021_08_13P	22	AC5	J6, Pin16	PIB009_08_32P	10	AD8
J6, Pin17	GND	-	-	J6, Pin18	GND	-	-
J6, Pin19	PIB019_08_17N	20	AE4	J6, Pin20	PIB011_08_32N	12	AC8
J6, Pin21	PIB017_08_17P	18	AF4	J6, Pin22	PIB013_08_30P	14	AE6
J6, Pin23	N.C.	-	-	J6, Pin24	N.C.	-	-
J6, Pin25	N.C.	-	-	J6, Pin26	N.C.	-	-

Adapter board J7 <-> USBV4F J22							
Testadapter	Signal Name	Pin	FPGA I/O	Testadapter	Signal Name	Pin	FPGA I/O
J7, Pin1	N.C.	-	-	J6, Pin2	N.C.	-	-
J7, Pin3	N.C.	-	-	J7, Pin4	N.C.	-	-
J7, Pin5	PIB188_05_18P	193	E23	J7, Pin6	PIB184_05_20P	189	C26
J7, Pin7	PIB190_05_18N	195	E22	J7, Pin8	PIB182_05_21N	187	C23
J7, Pin9	GND	-	-	J7, Pin10	GND	-	-
J7, Pin11	PIB192_05_29P	197	F26	J7, Pin12	PIB180_05_21P	185	D23
J7, Pin13	PIB194_05_29N	199	E26	J7, Pin14	PIB178_05_08N	183	A23
J7, Pin15	PIB196_05_31P	201	G26	J7, Pin16	PIB176_05_08P	181	A24
J7, Pin17	GND	-	-	J7, Pin18	GND	-	-
J7, Pin19	PIB198_05_31N	203	G25	J7, Pin20	PIB174_05_12P	179	E21
J7, Pin21	PIB186_05_28P	191	G24	J7, Pin22	PIB172_05_04P	177	D20
J7, Pin23	N.C.	-	-	J7, Pin24	N.C.	-	-
J7, Pin25	N.C.	-	-	J7, Pin26	N.C.	-	-

Adapter board J8 <-> USBV4F J22							
Testadapter	Signal Name	Pin	FPGA I/O	Testadapter	Signal Name	Pin	FPGA I/O
J8, Pin1	PIBCLK1N	157	B10	J8, Pin2	PIB152_06_09P	153	G10
J8, Pin3	PIBCLK1P	159	A10	J8, Pin4	PIB150_06_07N	151	F9
J8, Pin5	PIBCLK0N	161	A11	J8, Pin6	PIB148_06_07P	149	E9
J8, Pin7	PIBCLK0P	163	A12	J8, Pin8	PIB146_06_02N	147	C8
J8, Pin9	GND	-	-	J8, Pin10	GND	-	-
J8, Pin11	PIB160_05_03P	165	B18	J8, Pin12	PIB144_06_02P	145	D9
J8, Pin13	PIB162_05_03N	167	A18	J8, Pin14	PIB142_06_11N	143	C7
J8, Pin15	PIB164_05_13P	169	A20	J8, Pin16	PIB140_06_11P	141	B7
J8, Pin17	GND	-	-	J8, Pin18	GND	-	-
J8, Pin19	PIB166_05_13N	171	A19	J8, Pin20	PIB138_06_04P	139	D8
J8, Pin21	PIB168_05_15P	173	A22	J8, Pin22	PIB136_06_12P	137	C5
J8, Pin23	PIB170_05_15N	175	A21	J8, Pin24	PIB134_06_06N	135	A5
J8, Pin25	PIB154_06_09N	155	G9	J8, Pin26	PIB132_06_06P	133	A6

Adapter board J9 <-> USBV4F J22							
Testadapter	Signal Name	Pin	FPGA I/O	Testadapter	Signal Name	Pin	FPGA I/O
J9, Pin1	PIB112_06_28P	113	G4	J9, Pin2	PIB108_06_29P	109	H6
J9, Pin3	PIB114_06_20P	115	C2	J9, Pin4	PIB106_06_32N	107	H1
J9, Pin5	PIB116_06_27P	117	F4	J9, Pin6	PIB104_06_32P	105	H2
J9, Pin7	PIB118_06_27N	119	F3	J9, Pin8	PIB102_10_01N	103	J6
J9, Pin9	GND	-	-	J9, Pin10	GND	-	-
J9, Pin11	PIB120_06_25P	121	D2	J9, Pin12	PIB100_10_01P	101	J7
J9, Pin13	PIB122_06_25N	123	D1	J9, Pin14	PIB098_10_04P	99	J2
J9, Pin15	PIB124_06_16P	125	C4	J9, Pin16	PIB096_10_12P	97	M4
J9, Pin17	GND	-	-	J9, Pin18	GND	-	-
J9, Pin19	PIB126_06_16N	127	D4	J9, Pin20	PIB094_10_06N	95	K4
J9, Pin21	PIB128_06_15P	129	A4	J9, Pin22	PIB092_10_06P	93	K5

Adapter board J9 <-> USBV4F J22							
Testadapter	Signal Name	Pin	FPGA I/O	Testadapter	Signal Name	Pin	FPGA I/O
J9, Pin23	PIB130_06_15N	131	B4	J9, Pin24	PIB090_10_05N	91	L6
J9, Pin25	PIB110_06_29N	111	H5	J9, Pin26	PIB088_10_05P	89	L7

Adapter board J10 <-> USBV4F J22							
Testadapter	Signal Name	Pin	FPGA I/O	Testadapter	Signal Name	Pin	FPGA I/O
J10, Pin1	PIB068_10_25P	69	R8	J10, Pin2	PIB064_10_27P	65	T7
J10, Pin3	PIB070_10_25N	71	R7	J10, Pin4	PIB062_10_20P	63	R4
J10, Pin5	PIB072_10_18P	73	P5	J10, Pin6	PIB060_10_28P	61	U3
J10, Pin7	PIB074_10_18N	75	P4	J10, Pin8	PIB058_10_26N	59	T3
J10, Pin9	GND	-	-	J10, Pin10	GND	-	-
J10, Pin11	PIB076_10_14P	77	N3	J10, Pin12	PIB056_10_26P	57	T4
J10, Pin13	PIB078_10_14N	79	N2	J10, Pin14	PIB054_10_30N	55	V1
J10, Pin15	PIB080_10_11P	81	M2	J10, Pin16	PIB052_10_30P	53	V2
J10, Pin17	GND	-	-	J10, Pin18	GND	-	-
J10, Pin19	PIB082_10_11N	83	M1	J10, Pin20	PIB050_08_05N	51	W5
J10, Pin21	PIB084_10_09N	85	L8	J10, Pin22	PIB048_08_05P	49	W6
J10, Pin23	PIB086_10_09P	87	M8	J10, Pin24	PIB046_08_09N	47	Y5
J10, Pin25	PIB066_10_27N	67	T6	J10, Pin26	PIB044_08_09P	45	Y6

Adapter board J11 <-> USBV4F J22							
Testadapter	Signal Name	Pin	FPGA I/O	Testadapter	Signal Name	Pin	FPGA I/O
J11, Pin1	PIB024_08_15P	25	AF3	J11, Pin2	PIB020_08_22P	21	AD5
J11, Pin3	PIB026_08_15N	27	AE3	J11, Pin4	PIB018_08_24N	19	AB6
J11, Pin5	PIB028_08_14P	29	AC2	J11, Pin6	PIB016_08_24P	17	AC6
J11, Pin7	PIB030_08_14N	31	AC1	J11, Pin8	PIB014_08_19N	15	AF5
J11, Pin9	GND	-	-	J11, Pin10	GND	-	-
J11, Pin11	PIB032_08_10P	33	AB1	J11, Pin12	PIB012_08_19P	13	AF6
J11, Pin13	PIB034_08_10N	35	AA1	J11, Pin14	PIB010_08_20P	11	AA7
J11, Pin15	PIB036_08_12P	37	AB3	J11, Pin16	PIB008_08_28P	9	AC7
J11, Pin17	GND	-	-	J11, Pin18	GND	-	-
J11, Pin19	PIB038_08_04P	39	W4	J11, Pin20	PIB006_08_29N	7	AB9
J11, Pin21	PIB040_08_06P	41	Y2	J11, Pin22	PIB004_08_29P	5	AC9
J11, Pin23	PIB042_08_06N	43	Y1	J11, Pin24	PIB002_08_27N	3	AA10
J11, Pin25	PIB022_08_22N	23	AD4	J11, Pin26	PIB000_08_27P	1	Y10

Adapter board J12		
Adapter board	Signal Name	Comment
J12, Pin1	GND	
J12, Pin2	5 Volt	USBV4F Output
J12, Pin3	GND	